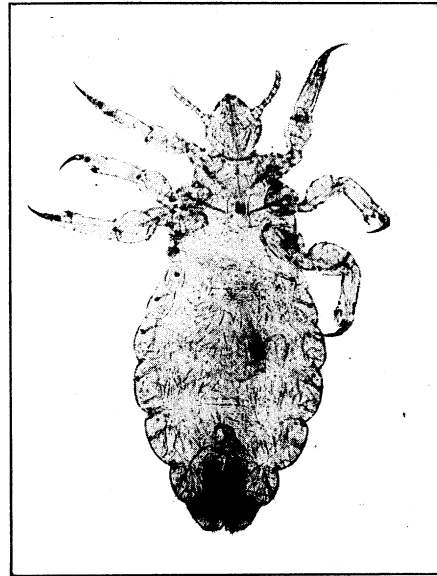


CALIFORNIA STATE BOARD OF HEALTH MONTHLY BULLETIN

by inheritance
ture, as truly in
en do not gather
nor figs from
strong constitu-
ring from weak

W. T. SEDGWICK.



The "cootie," *pediculus vestimenti*, which transmits typhus fever and trench fever. Typhus is now widely prevalent in many parts of the world, and is epidemic in several Pacific ports of South America. California communities must not tolerate conditions that may favor the development of these dangerous insects.

Q STATE CONTROL OF LEPERS
WHAT ABOUT MALARIA?

Q DECEMBER, 1919